



GEO-CHEM LABORATORIES PVT.LTD.

Pragati, Adjacent to Crompton Greaves,
Kanjur Marg (E), Mumbai 400042.

Tel : +91 22 61915100 Fax : +91 22 61915101

Email : laboratory@geochem.net.in

CIN: U74220MH1964PTC013022

International
Independent Inspection
&
Testing Company
TEST CERTIFICATEAnalysis No. : MISC/17/07/009132
Date : 09/08/2017

Party's Name & Address : Home Insect Control Association
C/o. Jyothy Laboratories Limited
Ujala House, Ramakrishna Mandir Road,
Kondivita, Andheri(E), Mumbai - 400059

Ref. no. and Date : Letter Dated 13/07/2017

Sample Received on : 27/07/2017

Date of Analysis : 28/07/2017 - 08/08/2017

Sample Described as : Power Herbal And Natural Incense Sticks

Tested to Specification : Nil

Stamped by / Seal : Nil

ID Mark : Nil

Sr. No.	Test Pesticides :	Method/Technique	Result	Unit of Measure	Detection Limit
1.	Aldrin (Aldrin and dieldrin combined expressed as dieldrin)	GCMSMS/LCMS-MS	N.D	mg/kg(ppm)	0.01
2.	Chlordane (Cis - Trans)	GCMSMS/LCMS-MS	N.D	mg/kg(ppm)	0.01
3.	Chlorothalonil	GCMSMS/LCMS-MS	N.D	mg/kg(ppm)	0.01
4.	2,4 DDT	GCMSMS/LCMS-MS	N.D	mg/kg(ppm)	0.01
5.	4,4 DDT	GCMSMS/LCMS-MS	N.D	mg/kg(ppm)	0.01
6.	2,4 DDD	GCMSMS/LCMS-MS	N.D	mg/kg(ppm)	0.01
7.	4,4 DDD	GCMSMS/LCMS-MS	N.D	mg/kg(ppm)	0.01
8.	2'4 DDE	GCMSMS/LCMS-MS	N.D	mg/kg(ppm)	0.01
9.	4'4 DDE	GCMSMS/LCMS-MS	N.D	mg/kg(ppm)	0.01
4.	4,4 -DDT	GCMSMS/LCMS-MS	N.D	mg/kg(ppm)	0.01
5.	2,4 -DDD	GCMSMS/LCMS-MS	N.D	mg/kg(ppm)	0.01
6.	4,4 - DDD	GCMSMS/LCMS-MS	N.D	mg/kg(ppm)	0.01
7.	2,4 - DDE	GCMSMS/LCMS-MS	N.D	mg/kg(ppm)	0.01
8.	4,4 - DDE	GCMSMS/LCMS-MS	N.D	mg/kg(ppm)	0.01
9.	2,4 - DDT	GCMSMS/LCMS-MS	N.D	mg/kg(ppm)	0.01
10.	Dicofol	GCMSMS/LCMS-MS	N.D	mg/kg(ppm)	0.01
11.	Dieldrin (see Aldrin)	GCMSMS/LCMS-MS	N.D	mg/kg(ppm)	0.01
12.	Alpha Endosulphan	GCMSMS/LCMS-MS	N.D	mg/kg(ppm)	0.01
13.	Beta Endosulphan	GCMSMS/LCMS-MS	N.D	mg/kg(ppm)	0.01
14.	Endosulphan Sulphate	GCMSMS/LCMS-MS	N.D	mg/kg(ppm)	0.01
15.	Endrin	GCMSMS/LCMS-MS	N.D	mg/kg(ppm)	0.01
16.	Alpha HCH	GCMSMS/LCMS-MS	N.D	mg/kg(ppm)	0.01

Continue on next page

Analysis No.: MISC/17/07/009132 Dated 09/08/2017

Proforma No.: GCLPL/QF/5.10/02

Issue No. 6

Page: 1 of 6

Revision No. 0

1. Test Results related only to the sample (s) tested.
2. Test certificate in full or part shall not be reproduced unless written permission is obtained from M/s. Geo-Chem Laboratories Pvt. Ltd.
3. Geo-Chem Laboratories Pvt. Ltd. is not responsible for the authenticity of photocopied or computer scanned reports / certificates.

This inspection / testing has been performed to the best of our ability and our responsibility is limited to proven negligence. This certificate, which is issued on conditions stipulated overleaf, reflects our findings at the time and place of inspection / testing and does not relieve parties from their contractual obligations. Samples will be retained by us for a period of thirty days only, unless specific instructions to the contrary are received.





GEO-CHEM LABORATORIES PVT.LTD.

Pragati, Adjacent to Crompton Greaves,
Kanjur Marg (E), Mumbai 400042.

Tel : +91 22 61915100 Fax : +91 22 61915101

Email : laboratory@geochem.net.in

CIN: U74220MH1964PTC013022

International
Independent Inspection
&
Testing Company

Sr. No.	Test	Method/Technique	Result	Unit of Measure	Detection Limit
17.	Beta HCH	GCMSMS/LCMS-MS	N.D	mg/kg(ppm)	0.01
18.	Delta HCH	GCMSMS/LCMS-MS	N.D	mg/kg(ppm)	0.01
19.	Heptachlor epoxide	GCMSMS/LCMS-MS	N.D	mg/kg(ppm)	0.01
20.	Heptachlor	GCMSMS/LCMS-MS	N.D	mg/kg(ppm)	0.01
21.	Lindane	GCMSMS/LCMS-MS	N.D	mg/kg(ppm)	0.01
22.	4-bromo-2-chlorophenol (metabolite of Profenophos)	GCMSMS/LCMS-MS	N.D	mg/kg(ppm)	0.01
23.	Acephate	GCMSMS/LCMS-MS	N.D	mg/kg(ppm)	0.01
24.	Chlorfenvinphos	GCMSMS/LCMS-MS	N.D	mg/kg(ppm)	0.01
25.	Chlorpyrifos	GCMSMS/LCMS-MS	N.D	mg/kg(ppm)	0.01
26.	Chlorpyrifos methyl	GCMSMS/LCMS-MS	N.D	mg/kg(ppm)	0.01
27.	Diazinon	GCMSMS/LCMS-MS	N.D	mg/kg(ppm)	0.01
28.	Dichlorvos	GCMSMS/LCMS-MS	N.D	mg/kg(ppm)	0.01
29.	Dimethoate (Including Omethoate)	GCMSMS/LCMS-MS	N.D	mg/kg(ppm)	0.01
30.	Edifenphos	GCMSMS/LCMS-MS	N.D	mg/kg(ppm)	0.01
31.	Ethion	GCMSMS/LCMS-MS	N.D	mg/kg(ppm)	0.01
32.	Etrimfos	GCMSMS/LCMS-MS	N.D	mg/kg(ppm)	0.01
33.	Fenitrothion	GCMSMS/LCMS-MS	N.D	mg/kg(ppm)	0.01
34.	Iprobenphos	GCMSMS/LCMS-MS	N.D	mg/kg(ppm)	0.01
35.	Fenthion-sulfone	GCMSMS/LCMS-MS	N.D	mg/kg(ppm)	0.01
36.	Fenthion-sulfoxide	GCMSMS/LCMS-MS	N.D	mg/kg(ppm)	0.01
37.	Malathion	GCMSMS/LCMS-MS	N.D	mg/kg(ppm)	0.01
38.	Malaoxon	GCMSMS/LCMS-MS	N.D	mg/kg(ppm)	0.01
39.	Methamidophos	GCMSMS/LCMS-MS	N.D	mg/kg(ppm)	0.01
40.	Monocrotophos	GCMSMS/LCMS-MS	N.D	mg/kg(ppm)	0.01
41.	Omethoate	GCMSMS/LCMS-MS	N.D	mg/kg(ppm)	0.01
42.	Oxydemeton- methyl	GCMSMS/LCMS-MS	N.D	mg/kg(ppm)	0.01
43.	Demeton-S-methylsulfone	GCMSMS/LCMS-MS	N.D	mg/kg(ppm)	0.01
44.	Parathion ethyl	GCMSMS/LCMS-MS	N.D	mg/kg(ppm)	0.01
45.	Parathion methyl	GCMSMS/LCMS-MS	N.D	mg/kg(ppm)	0.01
46.	Paraoxon methyl	GCMSMS/LCMS-MS	N.D	mg/kg(ppm)	0.01
47.	Phenthoate	GCMSMS/LCMS-MS	N.D	mg/kg(ppm)	0.01
48.	Phorate	GCMSMS/LCMS-MS	N.D	mg/kg(ppm)	0.01
49.	Phorate-sulfone	GCMSMS/LCMS-MS	N.D	mg/kg(ppm)	0.01
50.	Phorate-sulfoxide	GCMSMS/LCMS-MS	N.D	mg/kg(ppm)	0.01
51.	Phosalone	GCMSMS/LCMS-MS	N.D	mg/kg(ppm)	0.01
52.	Phosphamidon	GCMSMS/LCMS-MS	N.D	mg/kg(ppm)	0.01
53.	Pirimiphos-methyl	GCMSMS/LCMS-MS	N.D	mg/kg(ppm)	0.01
54.	Profenophos	GCMSMS/LCMS-MS	N.D	mg/kg(ppm)	0.01
55.	Propetamphos	GCMSMS/LCMS-MS	N.D	mg/kg(ppm)	0.01

Continue on next page

Analysis No.: MISC/17/07/009132 Dated 09/08/2017

Proforma No.: GCLPL/QF/5.10/02

Issue No. 6

Page: 2 of 6

Revision No. 0

1. Test Results related only to the sample (s) tested.
2. Test certificate in full or part shall not be reproduced unless written permission is obtained from M/s. Geo-Chem Laboratories Pvt. Ltd.
3. Geo-Chem Laboratories Pvt. Ltd. is not responsible for the authenticity of photocopied or computer scanned reports / certificates.

This inspection / testing has been performed to the best of our ability and our responsibility is limited to proven negligence. This certificate, which is issued on conditions stipulated overleaf, reflects our findings at the time and place of inspection / testing and does not relieve parties from their contractual obligations. Samples will be retained by us for a period of thirty days only, unless specific instructions to the contrary are received.





GEO-CHEM LABORATORIES PVT.LTD.

Pragati, Adjacent to Crompton Greaves,
Kanjur Marg (E), Mumbai 400042.

Tel : +91 22 61915100 Fax : +91 22 61915101

Email : laboratory@geochem.net.in

CIN: U74220MH1964PTC013022

International
Independent Inspection
&
Testing Company

Sr. No.	Test	Method/Technique	Result	Unit of Measure	Detection Limit
56.	Quinalphos	GCMSMS/LCMS-MS	N.D	mg/kg(ppm)	0.01
57.	Temephos	GCMSMS/LCMS-MS	N.D	mg/kg(ppm)	0.01
58.	Thiometon	GCMSMS/LCMS-MS	N.D	mg/kg(ppm)	0.01
59.	Triazophos	GCMSMS/LCMS-MS	N.D	mg/kg(ppm)	0.01
60.	Allethrin	GCMSMS/LCMS-MS	N.D	mg/kg(ppm)	0.01
61.	Bioallethrin	GCMSMS/LCMS-MS	N.D	mg/kg(ppm)	0.01
62.	Bifenthrin	GCMSMS/LCMS-MS	N.D	mg/kg(ppm)	0.01
63.	Cypermethrin I	GCMSMS/LCMS-MS	0.25	mg/kg(ppm)	0.01
64.	Cypermethrin II	GCMSMS/LCMS-MS	N.D	mg/kg(ppm)	0.01
65.	Cypermethrin III	GCMSMS/LCMS-MS	N.D	mg/kg(ppm)	0.01
66.	Cypermethrin IV	GCMSMS/LCMS-MS	N.D	mg/kg(ppm)	0.01
67.	Deltamethrin	GCMSMS/LCMS-MS	N.D	mg/kg(ppm)	0.01
68.	Ethofenprox (Etofenprox)	GCMSMS/LCMS-MS	N.D	mg/kg(ppm)	0.01
69.	Fenpropathrin	GCMSMS/LCMS-MS	N.D	mg/kg(ppm)	0.01
70.	Fenvalerate & Esfenvalerate (sum of RR & SS isomers)	GCMSMS/LCMS-MS	N.D	mg/kg(ppm)	0.01
71.	Fenvalerate & Esfenvalerate (sum of RS & SR isomers)	GCMSMS/LCMS-MS	N.D	mg/kg(ppm)	0.01
72.	Lambda-cyhalothrin	GCMSMS/LCMS-MS	N.D	mg/kg(ppm)	0.01
73.	cis-Permethrin	GCMSMS/LCMS-MS	N.D	mg/kg(ppm)	0.01
74.	trans-Permethrin	GCMSMS/LCMS-MS	N.D	mg/kg(ppm)	0.01
75.	tau- Fluvalinate I	GCMSMS/LCMS-MS	N.D	mg/kg(ppm)	0.01
76.	tau- Fluvalinate II	GCMSMS/LCMS-MS	N.D	mg/kg(ppm)	0.01
77.	Transfluthrin	GCMSMS/LCMS-MS	2.57	mg/kg(ppm)	0.01
78.	Cyfluthrin I	GCMSMS/LCMS-MS	N.D	mg/kg(ppm)	0.01
79.	Cyfluthrin II	GCMSMS/LCMS-MS	N.D	mg/kg(ppm)	0.01
80.	Cyfluthrin III	GCMSMS/LCMS-MS	N.D	mg/kg(ppm)	0.01
81.	Cyfluthrin IV	GCMSMS/LCMS-MS	N.D	mg/kg(ppm)	0.01
82.	Atrazine	GCMSMS/LCMS-MS	N.D	mg/kg(ppm)	0.01
83.	Flufenazine	GCMSMS/LCMS-MS	N.D	mg/kg(ppm)	0.01
84.	Simazine	GCMSMS/LCMS-MS	N.D	mg/kg(ppm)	0.01
85.	Benalaxyl including other mixtures of constituent isomers including Benalaxyl-M (sum of isomers)	GCMSMS/LCMS-MS	N.D	mg/kg(ppm)	0.01
86.	Metalaxyl	GCMSMS/LCMS-MS	N.D	mg/kg(ppm)	0.01
87.	Oxycarboxin	GCMSMS/LCMS-MS	N.D	mg/kg(ppm)	0.01
88.	Propanil	GCMSMS/LCMS-MS	N.D	mg/kg(ppm)	0.01
89.	Bendiocarb	GCMSMS/LCMS-MS	N.D	mg/kg(ppm)	0.01
90.	Benfuracarb	GCMSMS/LCMS-MS	N.D	mg/kg(ppm)	0.01

Continue on next page

Analysis No.: MISC/17/07/009132 Dated 09/08/2017

Proforma No.: GCLPL/QF/5.10/02

Issue No. 6

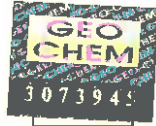
Page: 3 of 6

Revision No. 0

1. Test Results related only to the sample (s) tested.
2. Test certificate in full or part shall not be reproduced unless written permission is obtained from M/s. Geo-Chem Laboratories Pvt. Ltd.
3. Geo-Chem Laboratories Pvt. Ltd. is not responsible for the authenticity of photocopied or computer scanned reports / certificates.

This inspection / testing has been performed to the best of our ability and our responsibility is limited to proven negligence. This certificate, which is issued on conditions stipulated overleaf, reflects our findings at the time and place of inspection / testing and does not relieve parties from their contractual obligations. Samples will be retained by us for a period of thirty days only, unless specific instructions to the contrary are received.





GEO-CHEM LABORATORIES PVT.LTD.

Pragati, Adjacent to Crompton Greaves,
Kanjur Marg (E), Mumbai 400042.

Tel : +91 22 61915100 Fax : +91 22 61915101

Email : laboratory@geochem.net.in

CIN: U74220MH1964PTC013022

International
Independent Inspection
&
Testing Company

Sr. No.	Test	Method/Technique	Result	Unit of Measure	Detection Limit
91	Benomyl (see carbendazim)	GCMSMS/LCMS-MS	N.D	mg/kg(ppm)	0.01
92	Carbaryl	GCMSMS/LCMS-MS	N.D	mg/kg(ppm)	0.01
93	Carbofuran (Sum Of Carbofuran and 3 hydroxy-carbonfuran expressed as carbofuran)	GCMSMS/LCMS-MS	N.D	mg/kg(ppm)	0.01
94	Carbosulfan	GCMSMS/LCMS-MS	N.D	mg/kg(ppm)	0.01
95	Dazomet (Methylisothiocyanate resulting from the use of dazomet and metam)	GCMSMS/LCMS-MS	N.D	mg/kg(ppm)	0.01
96	Fenobucarb	GCMSMS/LCMS-MS	N.D	mg/kg(ppm)	0.01
97	Indoxacarb	GCMSMS/LCMS-MS	N.D	mg/kg(ppm)	0.01
98	Iprovalicarb	GCMSMS/LCMS-MS	N.D	mg/kg(ppm)	0.01
99	Methomy and Thiodicarb (Sum Of Methomy and thiodicarb expressed as methomyl)				
100	Propoxur	GCMSMS/LCMS-MS	N.D	mg/kg(ppm)	0.01
101	Thiobencarb (Benthiocarb)	GCMSMS/LCMS-MS	N.D	mg/kg(ppm)	0.01
102	Thiodicarb (See Methomyl)	GCMSMS/LCMS-MS	N.D	mg/kg(ppm)	0.01
103	Fenarimol	GCMSMS/LCMS-MS	N.D	mg/kg(ppm)	0.01
104	Bitertanol	GCMSMS/LCMS-MS	N.D	mg/kg(ppm)	0.01
105	Difenoconazole	GCMSMS/LCMS-MS	N.D	mg/kg(ppm)	0.01
106	Flusilazole	GCMSMS/LCMS-MS	N.D	mg/kg(ppm)	0.01
107	Hexaconazole	GCMSMS/LCMS-MS	N.D	mg/kg(ppm)	0.01
108	Myclobutanil	GCMSMS/LCMS-MS	N.D	mg/kg(ppm)	0.01
109	Paclbutrazol	GCMSMS/LCMS-MS	N.D	mg/kg(ppm)	0.01
110	Penconazole	GCMSMS/LCMS-MS	N.D	mg/kg(ppm)	0.01
111	Propiconazole	GCMSMS/LCMS-MS	N.D	mg/kg(ppm)	0.01
112	Tebuconazole	GCMSMS/LCMS-MS	N.D	mg/kg(ppm)	0.01
113	Triadimefon	GCMSMS/LCMS-MS	N.D	mg/kg(ppm)	0.01
114	Triadimenol	GCMSMS/LCMS-MS	N.D	mg/kg(ppm)	0.01
115	Fenamidone	GCMSMS/LCMS-MS	N.D	mg/kg(ppm)	0.01
116	Iprodione	GCMSMS/LCMS-MS	N.D	mg/kg(ppm)	0.01
117	Famoxadone	GCMSMS/LCMS-MS	N.D	mg/kg(ppm)	0.01
118	Captafol	GCMSMS/LCMS-MS	N.D	mg/kg(ppm)	0.01
119	Captan	GCMSMS/LCMS-MS	N.D	mg/kg(ppm)	0.01
120	Carbendazim	GCMSMS/LCMS-MS	N.D	mg/kg(ppm)	0.01
121	Thiophanate-methyl	GCMSMS/LCMS-MS	N.D	mg/kg(ppm)	0.01
122	Acetamiprid	GCMSMS/LCMS-MS	N.D	mg/kg(ppm)	0.01
123	Clothianidin	GCMSMS/LCMS-MS	N.D	mg/kg(ppm)	0.01
124	Imidacloprid	GCMSMS/LCMS-MS	N.D	mg/kg(ppm)	0.01

Continue on next page

Analysis No.: MISC/17/07/009132 Dated 09/08/2017

Proforma No.: GCLPL/QF/5.10/02

Issue No. 6

Page: 4 of 6

Revision No. 0

1. Test Results related only to the sample (s) tested.
2. Test certificate in full or part shall not be reproduced unless written permission is obtained from M/s. Geo-Chem Laboratories Pvt. Ltd.
3. Geo-Chem Laboratories Pvt. Ltd. is not responsible for the authenticity of photocopied or computer scanned reports / certificates.

This inspection / testing has been performed to the best of our ability and our responsibility is limited to proven negligence. This certificate, which is issued on conditions stipulated overleaf, reflects our findings at the time and place of inspection / testing and does not relieve parties from their contractual obligations. Samples will be retained by us for a period of thirty days only, unless specific instructions to the contrary are received.





GEO-CHEM LABORATORIES PVT.LTD.
 Pragati, Adjacent to Crompton Greaves,
 Kanjur Marg (E), Mumbai 400042.
 Tel : +91 22 61915100 Fax : +91 22 61915101
 Email : laboratory@geochem.net.in
 CIN: U74220MH1964PTC013022

International
 Independent Inspection
 &
 Testing Company

<u>Sr. No.</u>	<u>Test</u>	<u>Method/Technique</u>	<u>Result</u>	<u>Unit of Measure</u>	<u>Detection Limit</u>
125	Thiacloprid	GCMSMS/LCMS-MS	N.D	mg/kg(ppm)	0.01
126	Thiamethoxam (Sum Of thiamethoxam and Clothianidin expressed as Thiamethoxam)	GCMSMS/LCMS-MS	N.D	mg/kg(ppm)	0.01
127	Cymoxanil	GCMSMS/LCMS-MS	N.D	mg/kg(ppm)	0.01
128	Dimethomorph	GCMSMS/LCMS-MS	N.D	mg/kg(ppm)	0.01
129	Tridemorph	GCMSMS/LCMS-MS	N.D	mg/kg(ppm)	0.01
130	Diafenthiuron	GCMSMS/LCMS-MS	N.D	mg/kg(ppm)	0.01
131	Diuron (Diuron including all components Containing 3, 4 - dichloroaniline moiety expressed as 3,4 - dichloroaniline)	GCMSMS/LCMS-MS	N.D	mg/kg(ppm)	0.01
132	Iodosulfuron-methyl (iodosulfuron including salts, expressed as iodosulfuron-methyl)	GCMSMS/LCMS-MS	N.D	mg/kg(ppm)	0.01
133	Isoproturon	GCMSMS/LCMS-MS	N.D	mg/kg(ppm)	0.01
134	Linuron	GCMSMS/LCMS-MS	N.D	mg/kg(ppm)	0.01
135	Lufenuron	GCMSMS/LCMS-MS	N.D	mg/kg(ppm)	0.01
136	Pencycuron	GCMSMS/LCMS-MS	N.D	mg/kg(ppm)	0.01
137	Flufenoxuron	GCMSMS/LCMS-MS	N.D	mg/kg(ppm)	0.01
138	Azoxystrobin	GCMSMS/LCMS-MS	N.D	mg/kg(ppm)	0.01
139	Kresoxim methyl	GCMSMS/LCMS-MS	N.D	mg/kg(ppm)	0.01
140	Pyraclostrobin	GCMSMS/LCMS-MS	N.D	mg/kg(ppm)	0.01
141	Trifloxystrobin	GCMSMS/LCMS-MS	N.D	mg/kg(ppm)	0.01
142	Fipronil	GCMSMS/LCMS-MS	N.D	mg/kg(ppm)	0.01
143	Fipronil sulfone	GCMSMS/LCMS-MS	N.D	mg/kg(ppm)	0.01
144	Chlorantranilliprole	GCMSMS/LCMS-MS	N.D	mg/kg(ppm)	0.01
145	Fenpyroximate	GCMSMS/LCMS-MS	N.D	mg/kg(ppm)	0.01
146	Oxyfluorfen	GCMSMS/LCMS-MS	N.D	mg/kg(ppm)	0.01
147	Pendimethalin	GCMSMS/LCMS-MS	N.D	mg/kg(ppm)	0.01
148	Trifluralin	GCMSMS/LCMS-MS	N.D	mg/kg(ppm)	0.01
149	Alachlor	GCMSMS/LCMS-MS	N.D	mg/kg(ppm)	0.01
150	Butachlor	GCMSMS/LCMS-MS	N.D	mg/kg(ppm)	0.01
151	Carboxin	GCMSMS/LCMS-MS	0.023	mg/kg(ppm)	0.01
152	Flufenacet (sum Of all Compounds containing the N Fluoropheny- N-isopropyl moiety expressed as flufenacet equivalent)	GCMSMS/LCMS-MS	N.D	mg/kg(ppm)	0.01
153	Metolachlor (with S-Metolachlor)	GCMSMS/LCMS-MS	N.D	mg/kg(ppm)	0.01
154	Novaluron	GCMSMS/LCMS-MS	N.D	mg/kg(ppm)	0.01
155	Abamectin (Sum Of avermectin B1a, Avermectin B1b and delta-8,9 isomer of avermectin B1a)	GCMSMS/LCMS-MS	N.D	mg/kg(ppm)	0.01
156	Bifenazate	GCMSMS/LCMS-MS	N.D	mg/kg(ppm)	0.01

Analysis No.: MISC/17/07/009132 Dated 09/08/2017

Proforma No.: GCLPL/QF/5.10/02

Issue No. 6

Continue on next page

Page: 5 of 6

Revision No. 0

Signature

1. Test Results related only to the sample (s) tested.
2. Test certificate in full or part shall not be reproduced unless written permission is obtained from M/s. Geo-Chem Laboratories Pvt. Ltd.
3. Geo-Chem Laboratories Pvt. Ltd. is not responsible for the authenticity of photocopied or computer scanned reports / certificates.

This inspection / testing has been performed to the best of our ability and our responsibility is limited to proven negligence. This certificate, which is issued on conditions stipulated overleaf, reflects our findings at the time and place of inspection / testing and does not relieve parties from their contractual obligations. Samples will be retained by us for a period of thirty days only, unless specific instructions to the contrary are received.

Regd. Off.: Geo-Chem House, 294, Shahid Bhagat Singh Road, Fort, Mumbai 400001. India.

www.geochem.net.in

N^o 268746



